

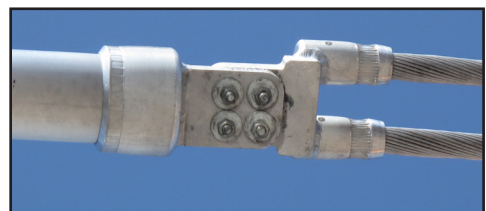
# SUPERIOR SUBSTATION AND

**DMC Power** was created with a vision to revolutionize the Electrical Utility industry with our 360° Swage Connection System.

Fast forward to today and our cutting-edge designs, local engineering experience, direct sales specialists and US-based manufacturing capabilities have propelled DMC Power connectors as the preferred choice for Utilities across North America.

Our customers realize the overall value that DMC Power provides at each and every jobsite and the distinct advantages our Swage System has over other connection methods by being:

- **Faster** – Connections in as little as 15 seconds
- **Safer** – Absence of gases, chemicals, explosions, molten metal and potential line failure minimizes installer safety risks
- **Repeatable** – No variability based on installer or weather; consistent connections time after time
- **Verifiable** – Simple to use “Go/No-Go” Gauge ensures the connection is secure. No x-rays or other expensive & lengthy inspection methods required
- **Tested** – Extensively tested to meet or exceed all nationally recognized standards, including ANSI C119.4, NEMA CC1, IEEE & ASTM
- **Certified** – ISO 9001:2015 facility with engineering, testing and manufacturing under one roof
- **All-Weather** – On the job 365 days a year; no downtime during rain, sleet, snow, high wind, high humidity or muddy conditions
- **Unsurpassed Quality** – The best materials engineered for each application & process
- **Lower Total Project Cost** – By the end of the job, the total cost of the project (not to mention the risk of injury or connector failure involved with other systems) is by far the lowest in the industry
- **Global Presence, Local Support** – Training when and where you need it



# TRANSMISSION CONNECTIONS

## SERIOUS QUALITY CONTROL

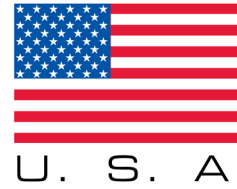
DMC Power is a "Total Quality" ISO 9001:2015 certified U.S. manufacturing facility committed to continuously and measurably improving our products, services and the overall Quality Management System.

Being ISO 9001:2015 certified helps ensure that our customers receive consistently great quality products with every order. This is achieved through continuous internal audits and yearly independent audits to verify our Quality Management System conforms to strict industry standards.

From initial quoting through on-time deliveries, our pledge to exceed customer expectations of a defect-free, premium value product is one we're proud to make and certain to deliver. We commit that we will provide:

- **Totally open communication with our customers**
- **Only the highest quality products and services**
- **Products and services delivered on time and in the best possible way**
- **Systems of continuous Quality Improvement**
- **Verified, independent test reports**
- **Continuously improved products, services, and the Quality Management System that supports them**

MADE IN



Our parts catalog contains just a small sample of the most popular connectors from the thousands of different styles and configurations we have available.

Each connector shown includes the base part number, description, image, a typical ordering example and a variety of icons which contain easy to understand information at a glance.

If you need more information, our world class sales and customer service teams are here to help you every step of the way. Simply call us at **888-SWAGE-NOW** or visit us online at **www.DMCPower.com** to see even more connectors, cut sheets, cross-reference guides, part builder tools and more!

<i>kV rating for a particular set of sizes*</i>	<i>Approximate weight for the middle sized OD of a particular connector**</i>	<i>Different pad widths commonly used</i>
<i>Base part number for the copper equivalent</i>	<i>Base part number for using a split run</i>	<i>Base part number for different pad widths than the one shown</i>
<i>Connector is frequently ordered with one end capped</i>	<i>Connector has an EHV rating</i>	<i>Connector is frequently tin-plated</i>
<i>Connector is frequently ordered with standard or custom angle variations</i>	<i>Shows the standard bolt circle patterns available</i>	<i>Suffix indicator for various pad sizes and angles</i>

\* Dependant on bolt shields, corona rings, cable spacing and application

\*\* Contact factory for exact weights